

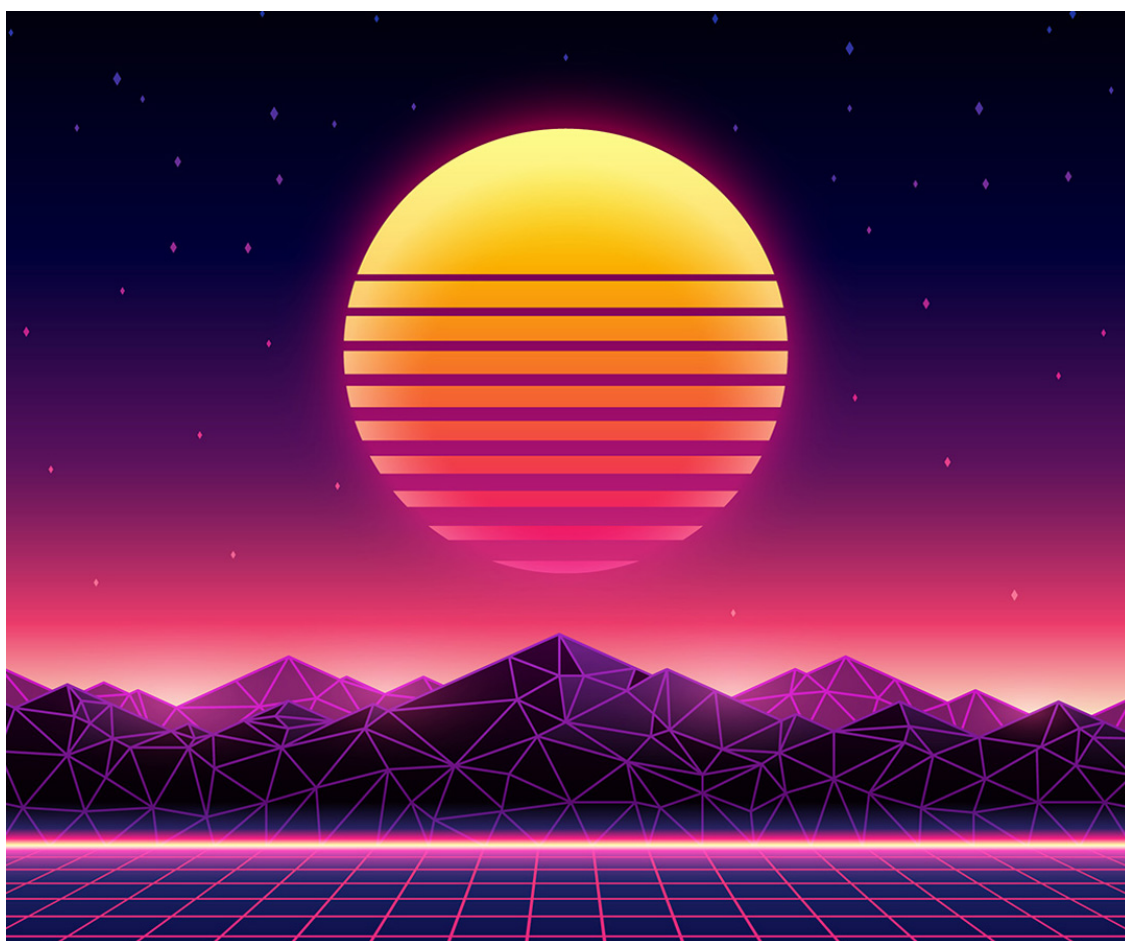
[View this email in your browser](#)

**NIHR** | National Institute  
for Health Research

 **AHCS**  
Academy for Healthcare Science

# The Road to Recognition

Clinical Research Practitioner Directory Bulletin | Issue 02 | May 2019



**“Tomorrow belongs only to the people who prepare for it today”**

The way the NHS recruits, develops and supports its people will be crucial to delivering the vision set out in the NHS Long Term Plan. To make the plan a reality we know the NHS will need **more staff working in rewarding roles, within a supportive culture**, where there are meaningful opportunities for career development and progression.

workforce was a common theme running through the day's presentations. For you as a CRP this is significant. It's an opportunity to ensure that **our journey to recognise and establish the professional identity of Clinical Research Practitioners** is informed by this rapidly changing policy landscape. The recognition of new roles, and the importance of a flexible and adaptable workforce, are key issues that are being explored through various working groups that are contributing to the workforce implementation plan due later this year.

Dame Sue Hill, Chief Scientific Officer for England, opened the Conference with the Malcom X quote: "Tomorrow belongs only to the people who prepare for it today", I'll close my update by saying **let's not miss the opportunity to show the crucial role CRPs play** in research delivery, and with it move a step closer to the accredited register you deserve.



*Fiona O'Neill, Business Change Lead*

## Tell us about your research background

Your views are essential to shaping accredited registration for you and your fellow CRPs. Please take our 10 minute survey and tell us about your education and experience. Your contribution is so important. We've already had 130 responses (Thank you if one of these is you, if not, you know what to do!)

## Take our survey

## The CRP Directory is here to stay!

We are delighted to see the CRP Directory community growing and coming together as work on establishing an accredited register is progressing. The CRP Directory was launched on 27 September, 2018. It is anticipated that **in September 2019 a fully considered proposal for accredited registration for CRPs** will go forward to the Professional Standards Authority. There will be much to share on this soon as part of consulting with you and others working in research delivery.

Yet, whatever happens, the CRP Directory will remain as a point of entry and connection for the CRP community committed to seeking accredited registration. And the joining fee will always be deductible from the fee to register, if and/or when you want to do this. **We need you to stay on board**

## New CRP resource pack available

Our brand new poster and leaflet resources have been winging their way across the country. Please do link up with communications and workforce development leads in your Local Clinical Research Network and let's get more posters stuck on walls and leaflets in hands. >>> **Poster and leaflet available for download** [here](#)

## Follow @NIHRCommunity

The NIHR's twitter handles have changed. @NIHRCRN is no more!

For the latest research delivery workforce updates >>> **follow** [@NIHR Community](#).

## Small Grants Scheme launches

The Patient and Public Involvement and Engagement (PPIE) Small Grants Scheme is now open to applications (closes 31 May). The scheme offers people across the NIHR Clinical Research Network the opportunity to access resources to try out new ideas aimed at increasing the involvement of patients and the public in health and social care research. >>>**Find out more:** [PPIE Small Grants Scheme](#)

## Question. Don't Clinical Research Nurses and AHPs call themselves CRPs?

In a word. Yes. Our current focus is on unregistered CRPs and establishing scope and standards of registration for this group, linked to the [Integrated Workforce Framework](#) (IWF). This is a necessary foundation to developing professional identity in clinical research delivery practice overall.

The IWF was developed as a resource for everyone involved in the delivery of clinical research. The CRP Directory will continue to exist once a CRP accredited register is established and the purpose of the Directory will evolve as a platform for supporting Clinical Research Practitioners as a community of practice, some preparing for registration.

We know there are overlapping identities and Clinical Research Nurses and AHPs in research may also see themselves as Clinical Research Practitioners. Interests shared in the CRP Directory community at the moment, like being recognised for your role in research delivery, are common to everyone in the team and there is an opportunity to recognise everyone's contribution as essential and complementary.

The professional identity of CRP may therefore cross boundaries in relation to registration as a healthcare professional. The precise title of registration is to be confirmed and needs to complement what people already understand about each other as healthcare professionals working within teams and across



*Janice Paterson, Delivery Lead*

Share to support our 1000 CRPs campaign

Not signed up? Apply to join the Directory

---

Individuals and organisations who want to know more can go to [bit.ly/CRPdirectory](https://bit.ly/CRPdirectory) or contact:

Janice Paterson (NIHR)  
e: [crpdirectory@nihr.ac.uk](mailto:crpdirectory@nihr.ac.uk)  
t: 0113 343 0083

Carly Allen (AHCS)  
e: [crpadmin@ahcs.ac.uk](mailto:crpadmin@ahcs.ac.uk)  
t: 07535 120667



---

*Copyright © 2019 Academy for Healthcare Science, All rights reserved.*

**Our mailing address is:**

Academy for Healthcare Science  
6 The Terrace, Rugby Road,  
Lutterworth, Leicestershire LE17 4BW

Want to change how you receive these emails?

You can [update your preferences](#) or [unsubscribe from this list](#).

---

This email was sent to <<Email Address>>

[why did I get this?](#) [unsubscribe from this list](#) [update subscription preferences](#)

Academy for Healthcare Science · 6 The Terrace · Rugby Road · Lutterworth, Leicestershire, LE17 4BW · United Kingdom

[Subscribe](#)

[Past Issues](#)

[Translate ▼](#)

[RSS](#)

